

Working with USDA

**Natural Resources Conservation
Service**

Dan Lenthall – NRCS

Stephanie Wilsen

Liz McGuire

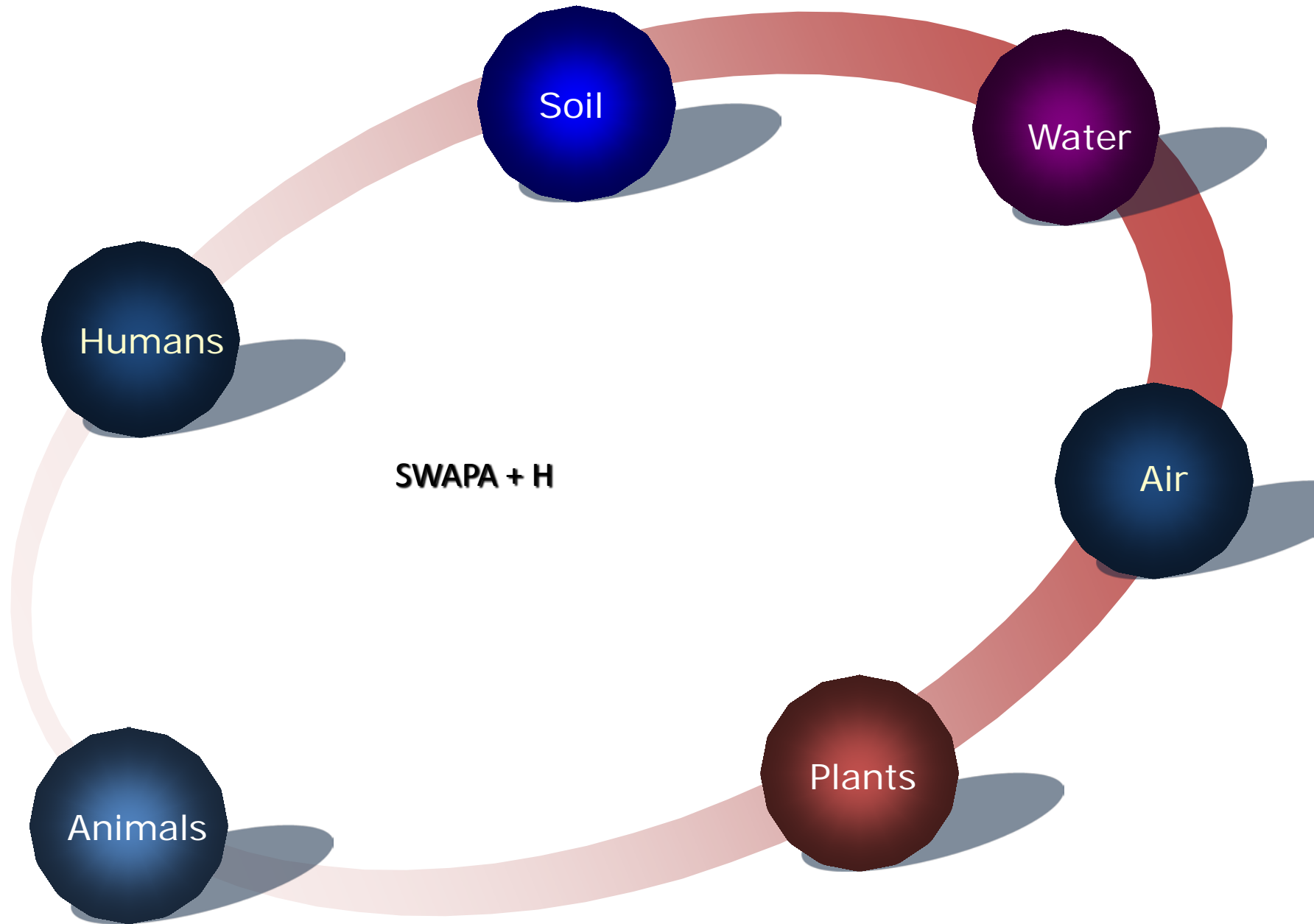
Julie Weiss

NRCS Motto

“ Helping People Help the Land”

NRCS provides technical and financial assistance to land users to establish “conservation practices” that protect or improve the natural resources of the site.

Inventory Resources



Resource Concerns

- Soil – Is there erosion? Is there adequate topsoil?
- Water - Is there too much or too little soil moisture for plant growth? Is there potential surface or ground water impacts from the operation?
- Plants – Are the plants suited for the site? Are there adequate nutrients?

Resource Concerns

- Animals – Is there adequate forages from pastures? Is there adequate habitat for wildlife?
- Air – Do operations create dusty conditions?
- Human – Is there adequate financial resources to make changes? Are practices feasible for the operation?

Conservation Plan

- A record of decisions made by the producer about the conservation practices they will complete to improve the natural resources.



Conservation Plan

- Is NOT a farm management plan
- Is NOT a farm business plan
- It IS based upon the land and activities on the land

Land



Soil Resources



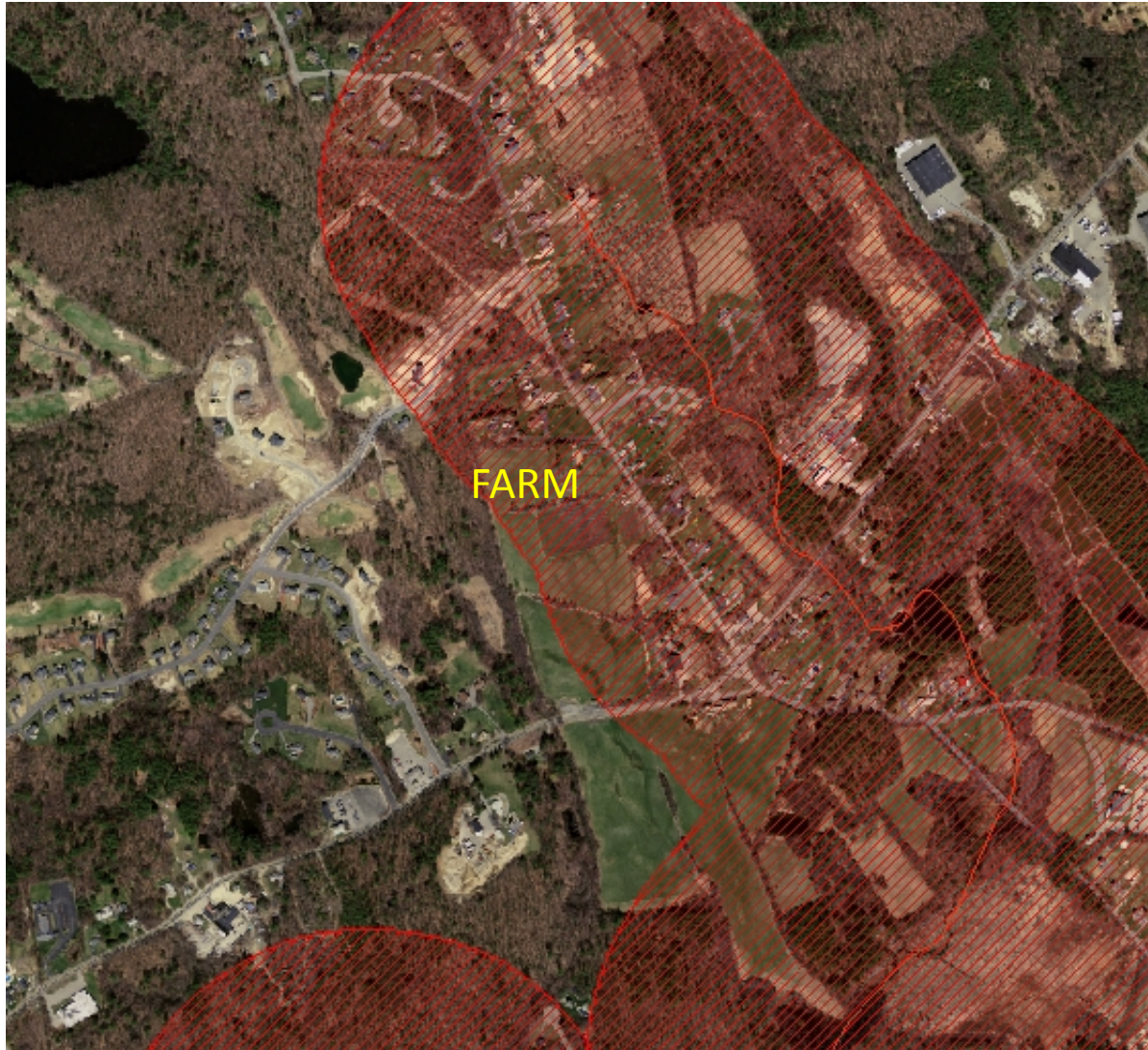
Surface Water Resources



Ground Water Resources



Impaired Water Resources



Plants and Animals

Wildlife



Potential Water Quality Issue



Over Used Pasture



Improved Irrigation

Drip Irrigation System



Permanent Main Lines



Exclude Livestock from Ditches and Streams



Protect Soil

Early Cover Crop – Oct 14th



Grassed Waterway



Wildlife Habitat

Grassland Birds



Invasive Species



Programs

EQIP

- Environmental Quality Incentives Program
- Must improve existing conditions
- Focus is on the natural resources of the site
- Many practices – largest program

AMA

- Agricultural Management Assistance
- Intended to reduce crop loss
- Limited number of practices
- 2017 changes added High Tunnels in with Risk Management Agency

Requirements

- Must be an eligible producer and control some land
- Land must be eligible – used in the past, not recently cleared wetlands,
- Establish farm records with FSA – Farm and tract number, actively engaged in agriculture
- Meet individual program requirements

Seasonal High Tunnels



Seasonal High Tunnels



What to consider

- Ground should be relatively level
- Soils should be well drained
- Access during the winter
- Ability to remove snow
- Access to water
- Sales during early and late seasons

Questions?

