

Sarah Bostick

NASAP

Cultivating Community

This institution is an equal opportunity provider.

March 15, 2013



Pest Identification



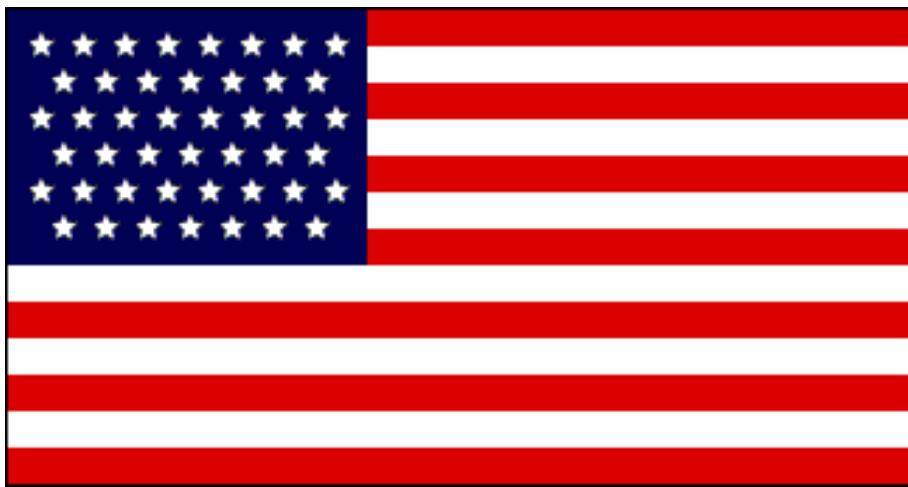
English names of pests in agriculture

1. What does it eat?
2. What does it look like or how does it behave?
3. What kind of insect is it?

What does it eat?



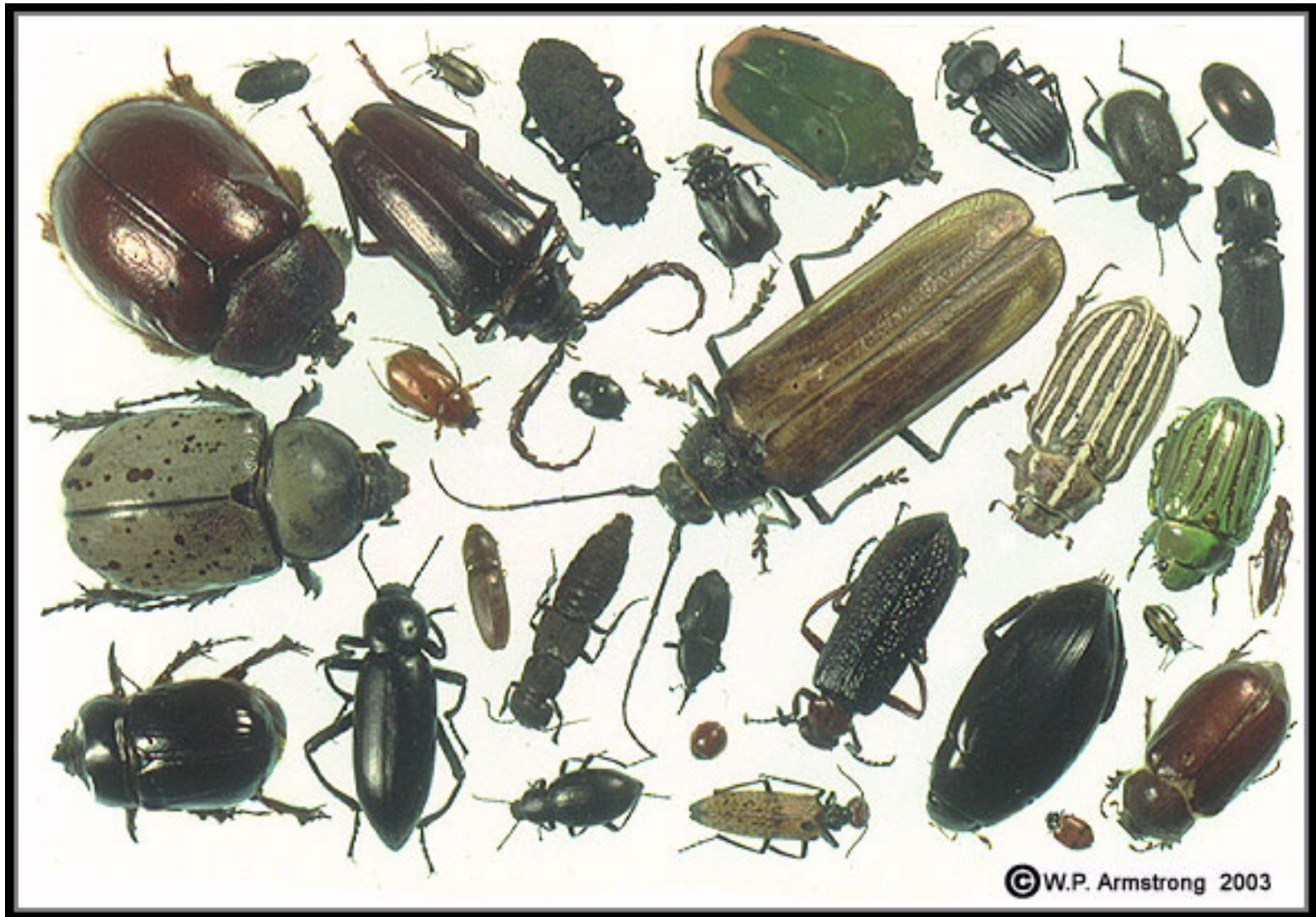
What does it look like?



What does it do?



BEEBLE



6 legs, wings, and a hard shell



Worm



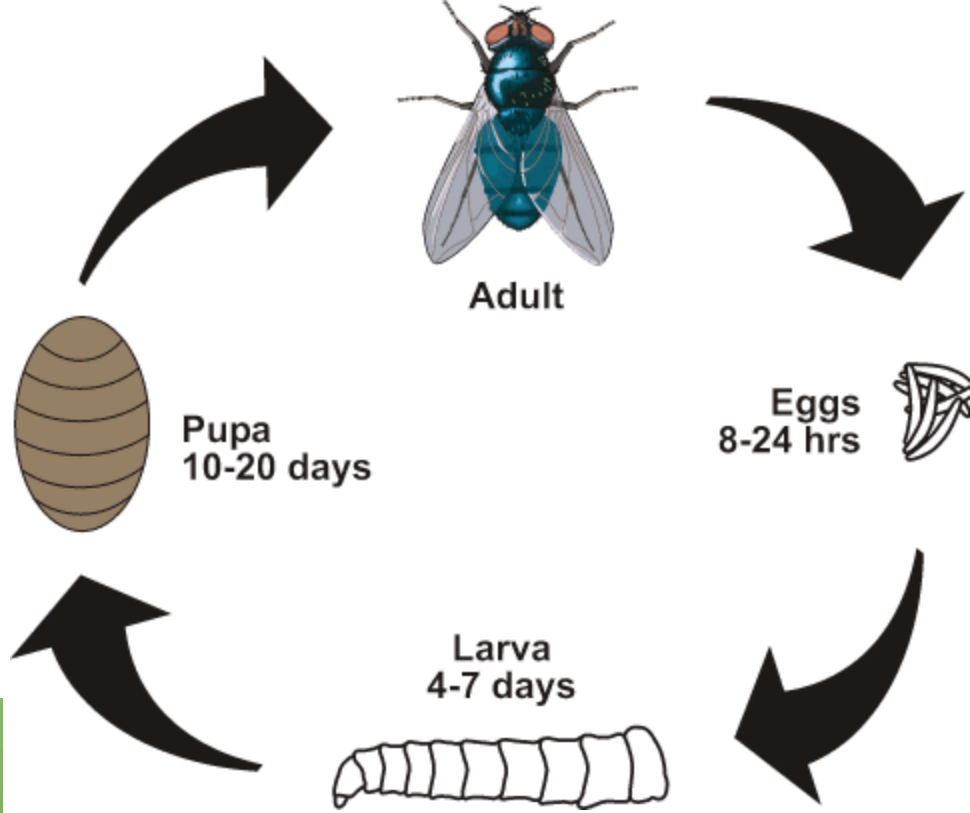
Caterpillar or worm





Maggot







BUGS



Colorado Potato Beetle

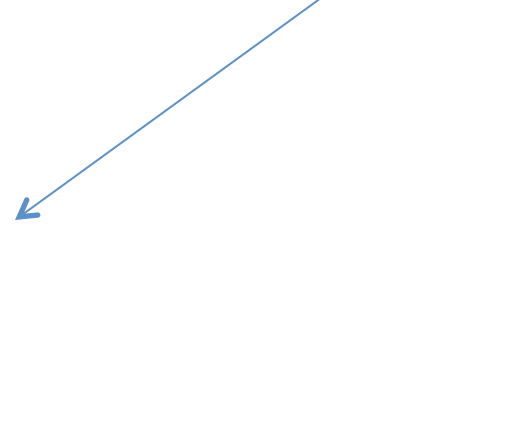




Colorado Potato Beetle Larvae







Striped Cucumber Beetle







Flea Beetles!





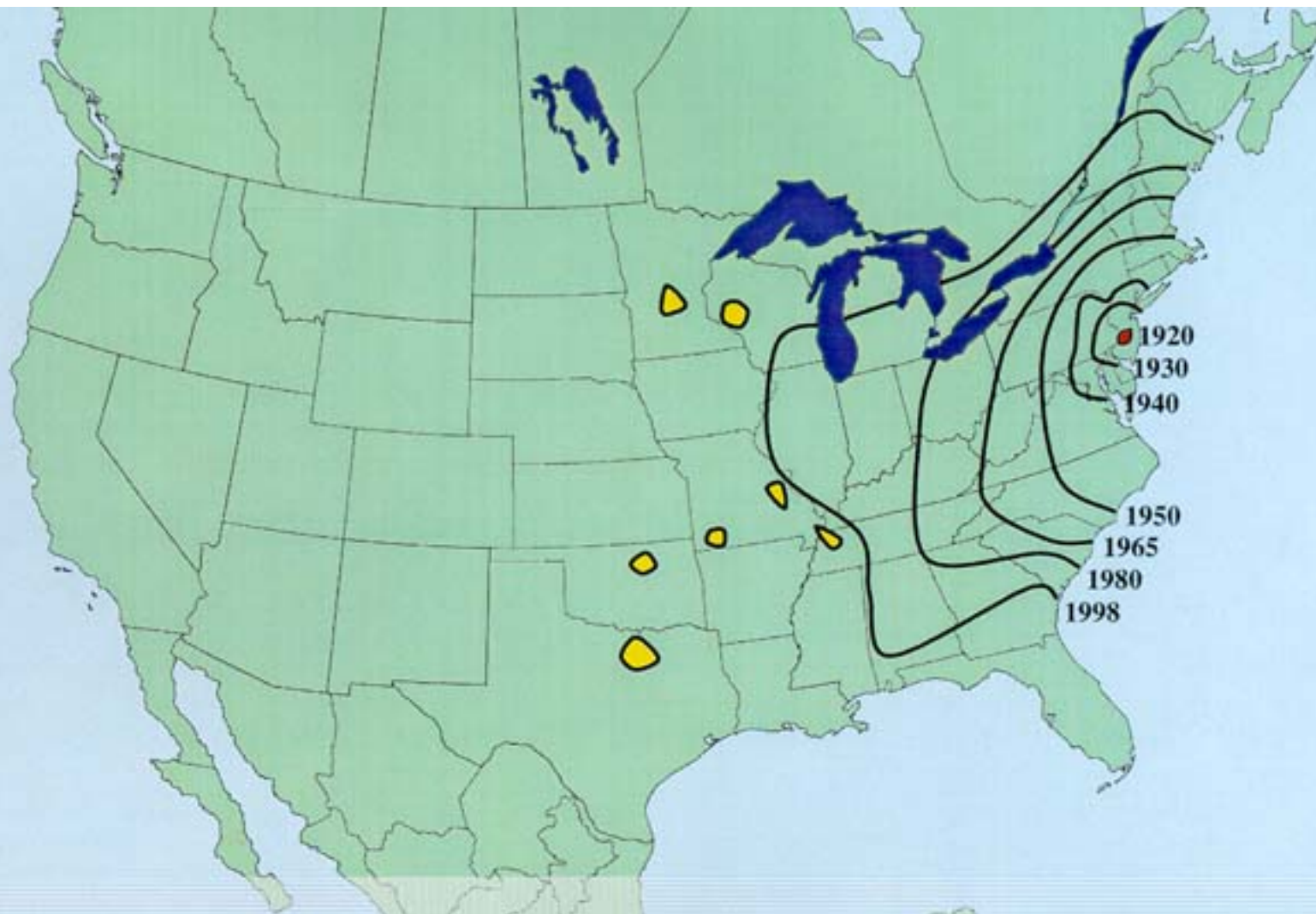




Japanese Beetle







The Spread of Japanese Beetle in North America, 1908-1998



JAPANESE BEETLE LIFE CYCLE

JAN FEB MAR APR MAY JUN JUL AUG SEP OCT NOV DEC



Mexican Bean Beetle





UGA1235207



Bean Beetle and Lady Bug Beetle



Cabbage Worm











Tomato Hornworm









4



3



2



1



a Cutworm Moth

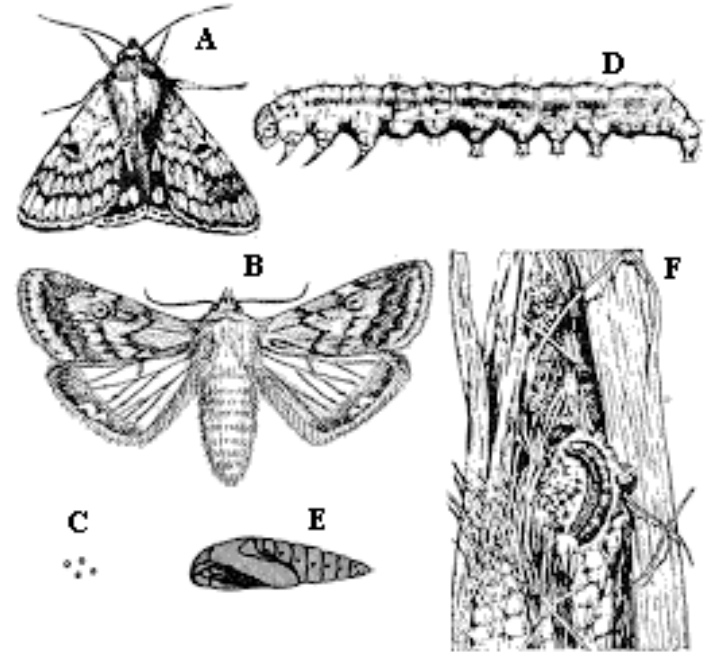
(*Suxoa radians*)

1. Larva or cutworm. 2. Shows how cutworm curls up when disturbed. 3. Pupa. 4. Adult moth.

Cutworm



Corn Ear Worm



Corn earworm. A & B, Adults. C, Eggs. D, Larva. E, Pupa. F, Damaged ear.



Wire Worm or Click Beetle





Army Worm



- Mostly eats grass
- Sometimes eats vegetables



Swallowtail Caterpillar



Swallowtail Caterpillar.....Butterfly



Cabbage Maggot



Valter Jacinto



Ric Bessin



Onion Root Maggot



Carrot Rust Fly Maggot



Seed Corn Maggot



Stink Bugs



Green Stink Bugs



Squash Bug



Squash Bug



Aphid (a kind of Bug)



Aphids and Lady Bug Beetle



Leaf Hoppers (a kind of Bug)





Potato Leaf Hopper



Farm level details and enrollment information on specific crop ins. programs are available from crop insurance agents

(www.rma.usda.gov/tools/agent.htm).